



Alaska Ship & Drydock, Inc

Operator of the

Ketchikan Shipyard

**Marine Industrial Technology Serving the North Pacific
and Arctic Oceans, and Alaska's Riverine System**





McKay Marine Ways 1988



City of Ketchikan - Tongass Historical Museum



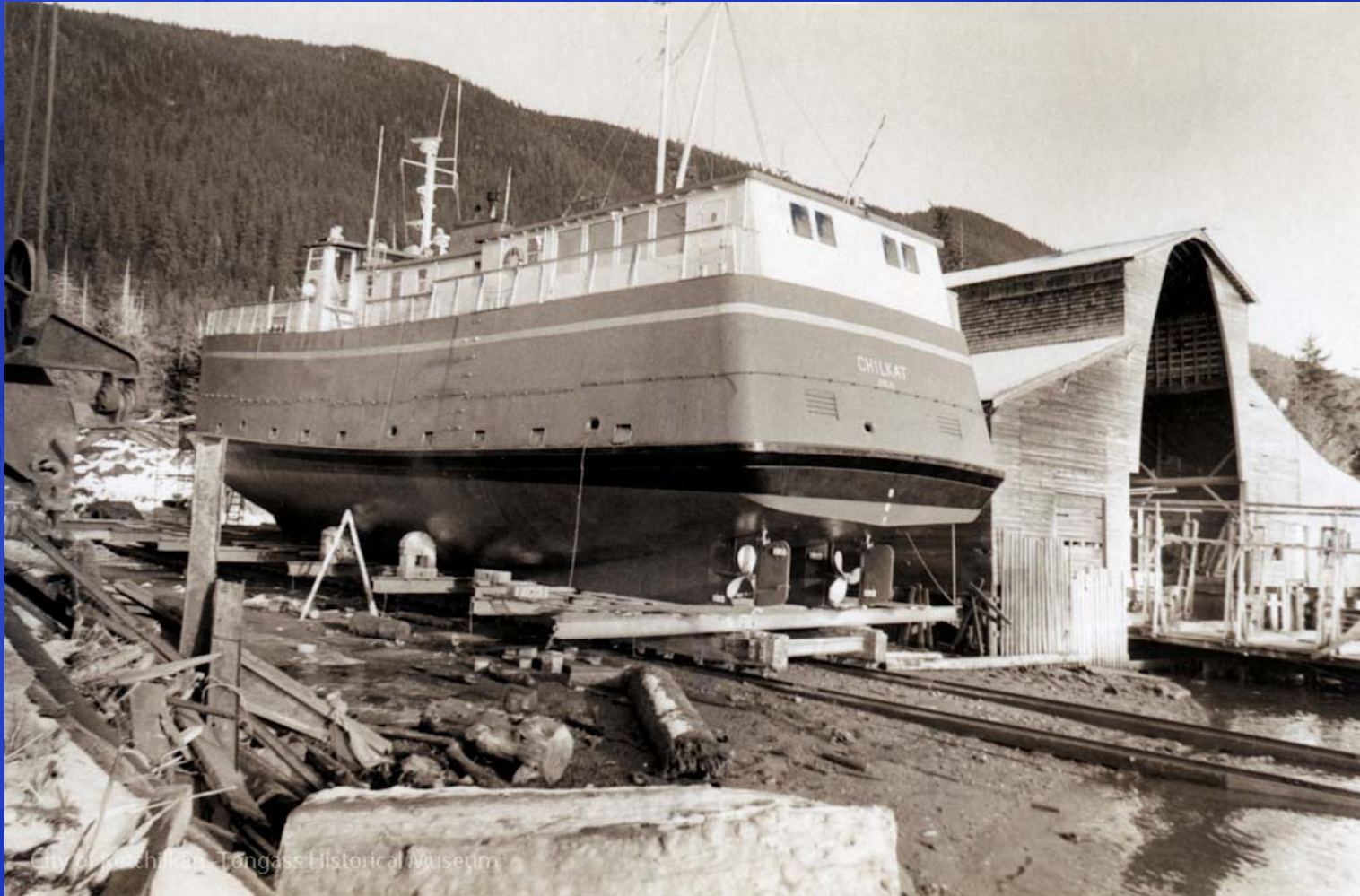
West End Ketchikan aerial 6-28-1952



City of Ketchikan - Tongass Historical Museum



MV Chilkat at Seward Marine Ways



City of Chilkat - Tongass Historical Museum



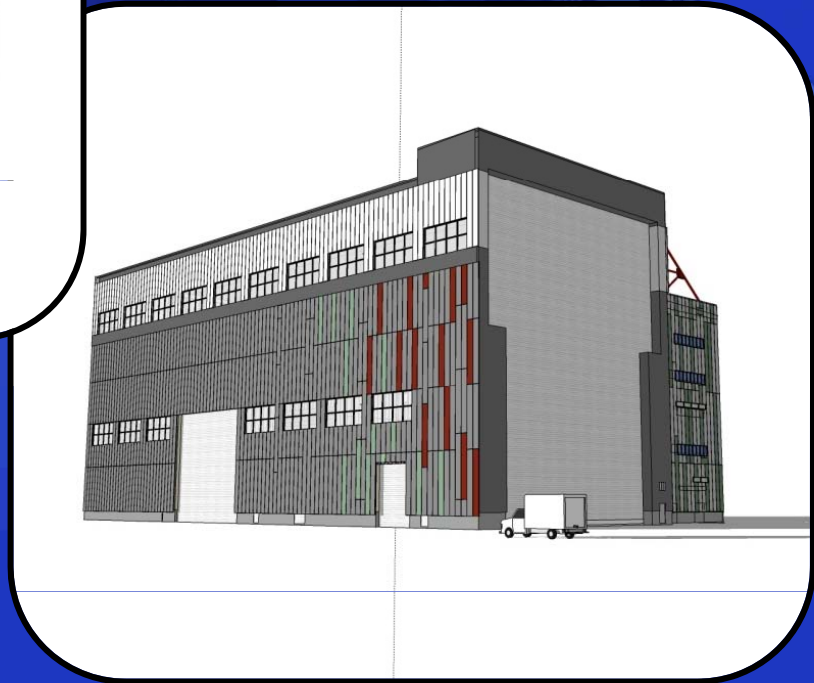
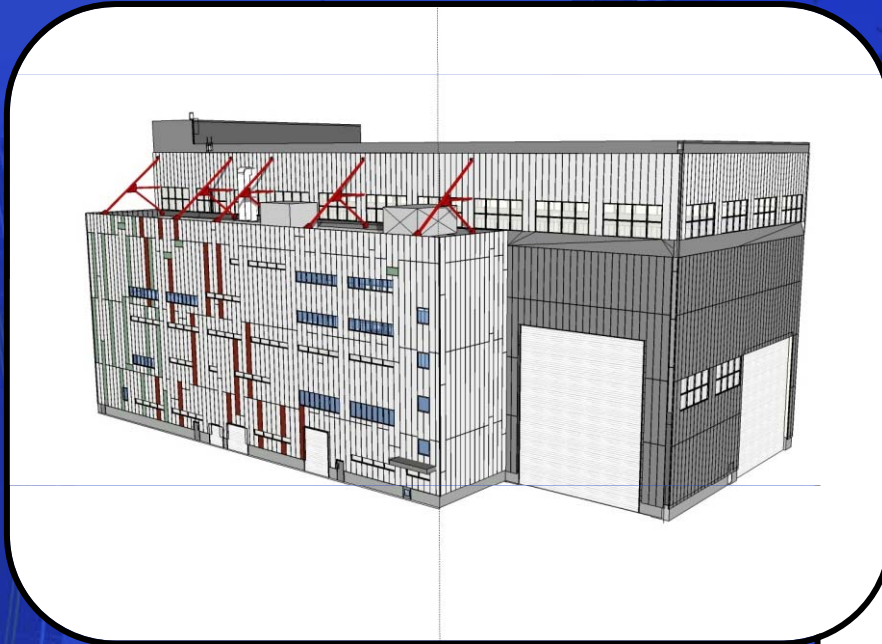
Ketchikan Shipyard Development Plan





Assembly Hall

Projected Completion: Fall 2012





Hull Number 001 – M/V Oral Freeman





Hull No. 002 Chevron Legacy

- Registered: Made in Alaska
- Jones Act Vessel Exported to the international market for commercial vessels





Hull No. 003 - M/V Susitna

Rapidly Deployable, Affordable Ports & Harbors Structures

Christened June 2010

Worlds first ice strengthened
twin hull vessel
Made in Alaska





Hull No. 4 M/V Ken Eichner II Ketchikan Borough Airport Ferry

Christening – April 2, 2011





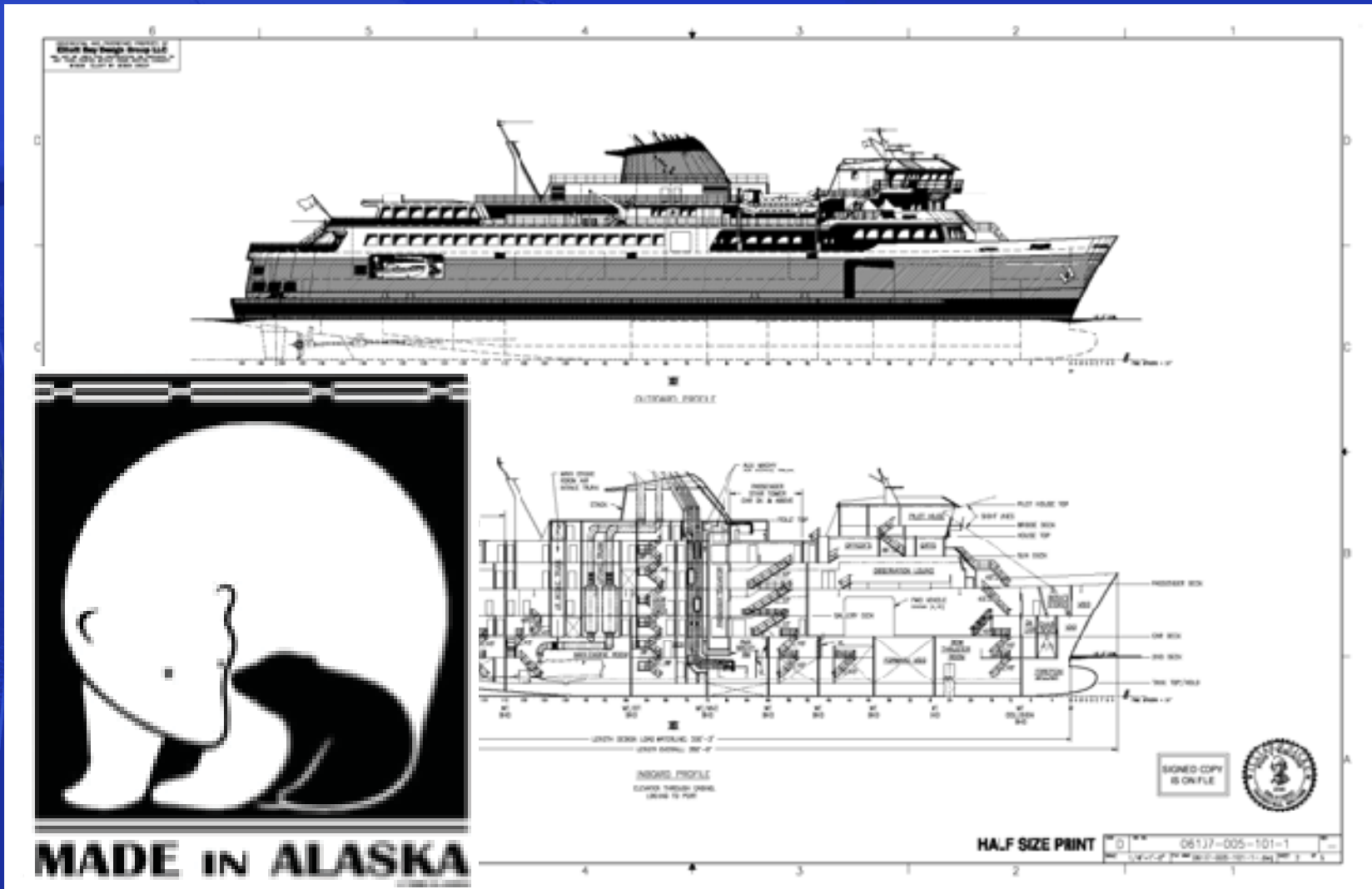
AmphibAlaska

A versatile vehicle for land and water





AMHS Alaska Class Ferry



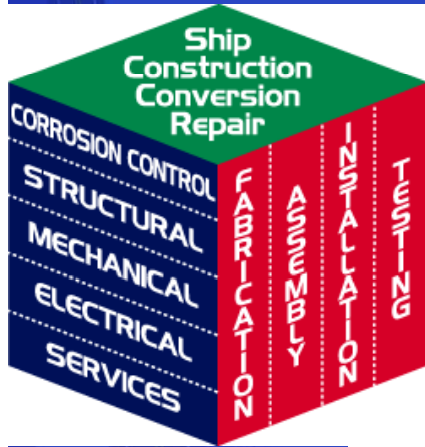


Support of Arctic OCS Oil & Gas - St. Johns Newfoundland

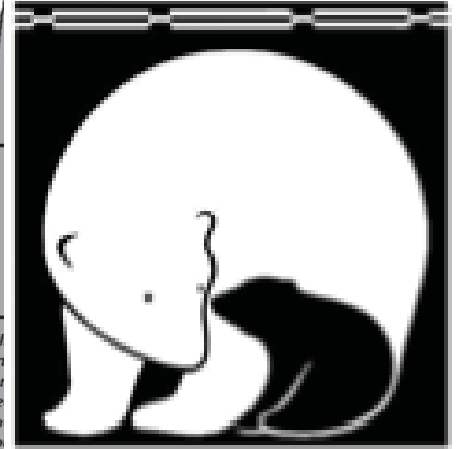
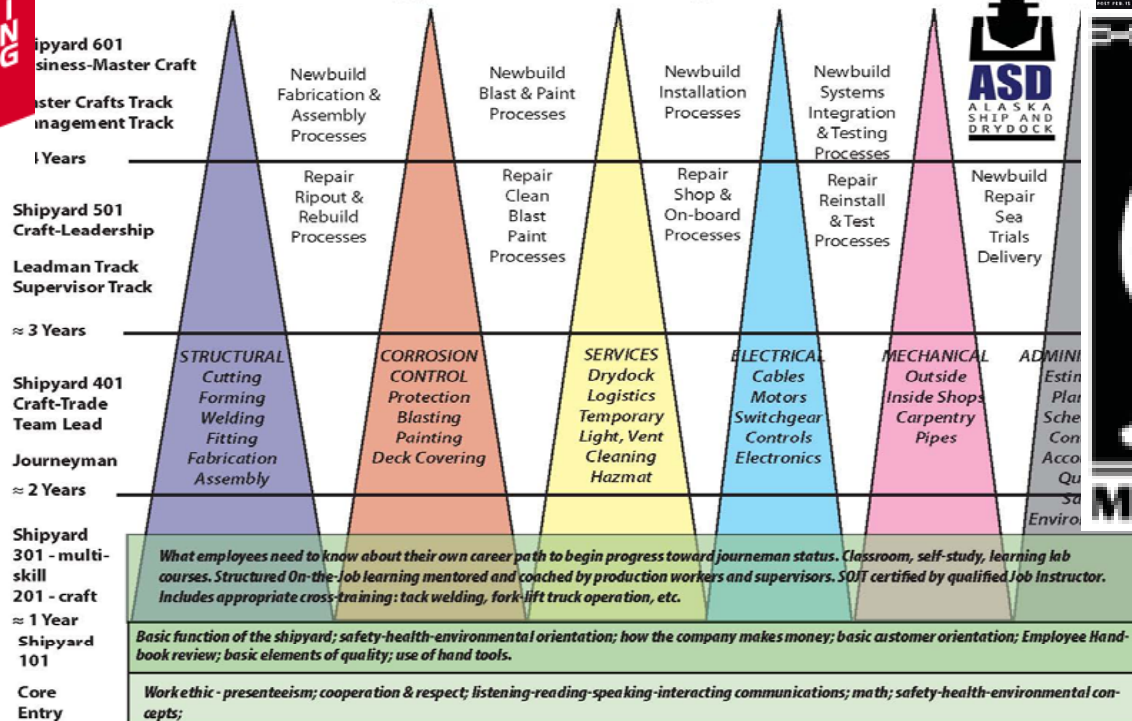




Multi-Skilled Shipyard Production Worker OJT Supported by Training Within Industry (TWI)



Shipyard Career Paths & Major Processes

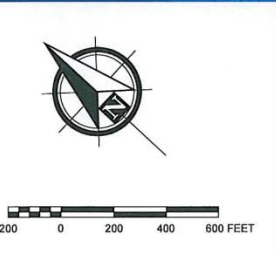
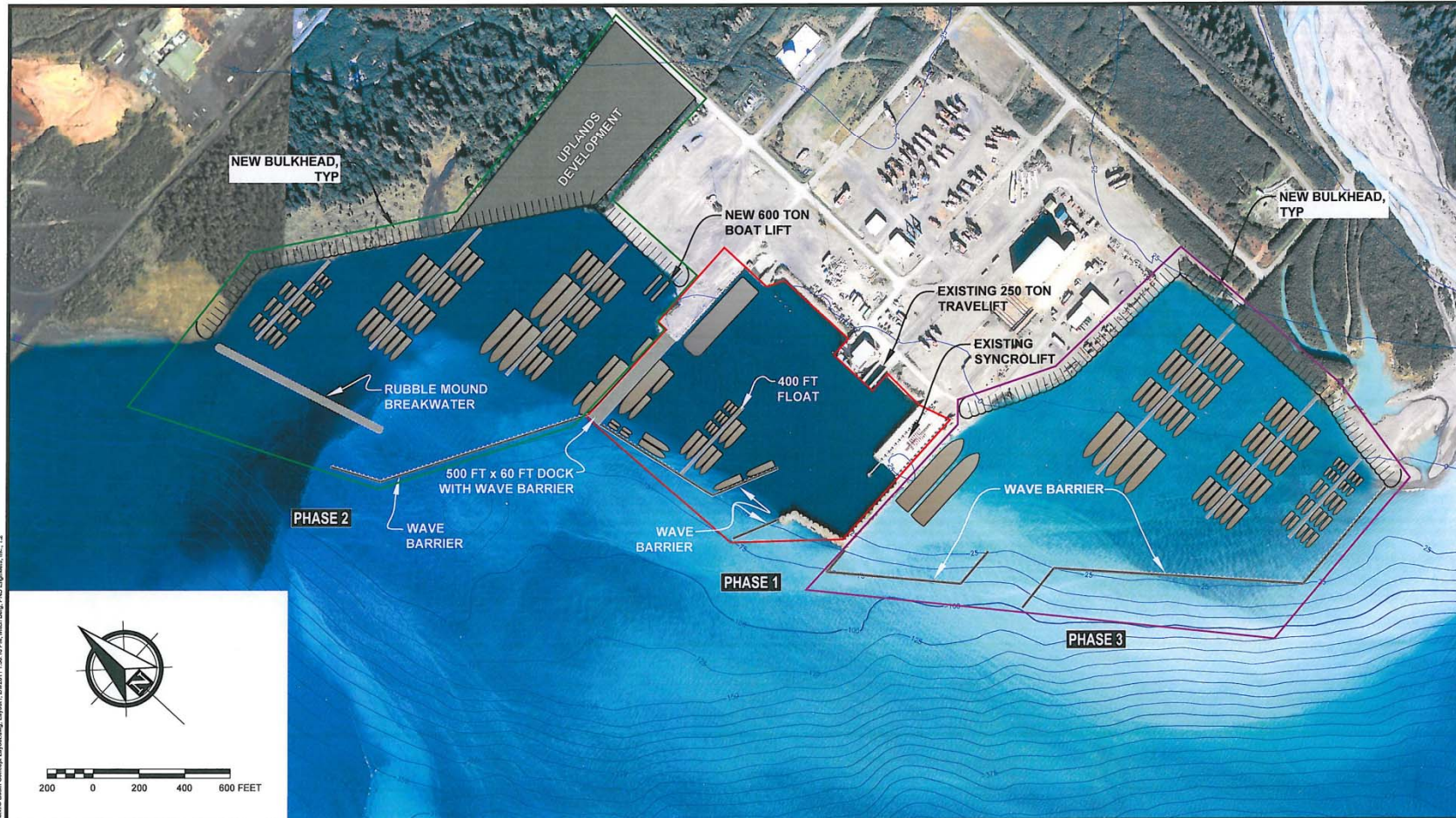


MADE IN ALASKA



Alaska's Ports and Harbors

Alaska Coastal Villages Fund Moving to Alaska



CONCEPT
2/9/11

PHD Engineers, Inc. (PHD) is not responsible for safety programs, methods or procedures of operation, or the construction of the design shown on these drawings. Where specifications are general or not called out, the specifications shall conform to standards of industry. Drawings are for use on this project only and are not intended for reuse without written approval from PHD. Drawings are also not to be used in any manner that would constitute a detriment directly or indirectly to PHD.

REV	DATE	DESCRIPTION	DATE

1506 West 36th Avenue
Anchorage, Alaska 99503
Phone: 907.561.1011
Fax: 907.563.4220
www.phdengineers.com



PROJECT		SEWARD SMIC BASIN	
TITLE		CONCEPTUAL LAYOUT	
DESIGNED BY:	KWB	DATE:	2/9/11
CHECKED BY:	JWP	PROJECT NO.:	111015

Figure 2

J:\2011\11015 Seward SMIC Basin\Concept\SMIC Basin Concept Layout.dwg, Layout1, 2/9/2011, 1:36:18 PM, JWP, JWP, PHD Engineers, Inc., 1, 2